

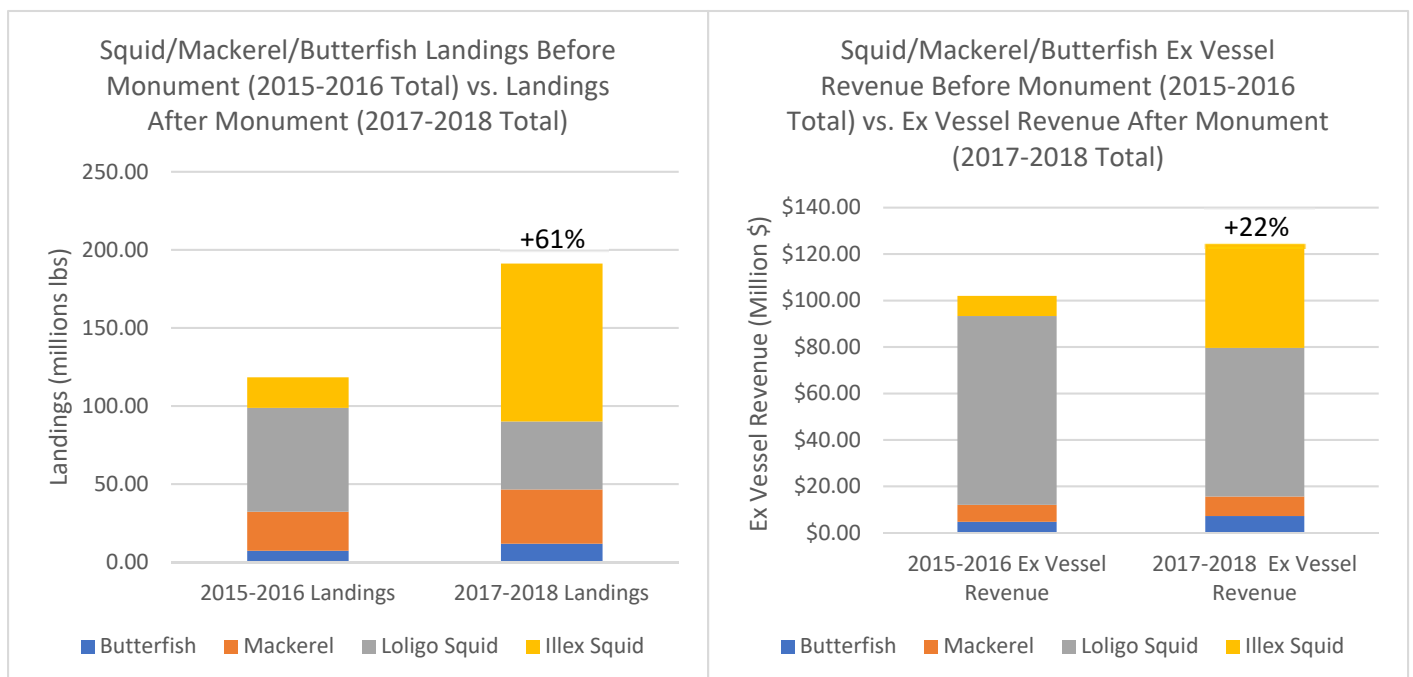
**THE NORTHEAST CANYONS AND SEAMOUNTS MARINE NATIONAL MONUMENT:
IMPACTS ON THE COMMERCIAL FISHERIES (UPDATED SEPTEMBER 2019)**

According to the fishing industry, the primary commercial fisheries that had been operating in the Northeast Canyons and Seamounts Marine National Monument but that are now prohibited are: (1) the squid, mackerel, and butterfish fishery,¹ and (2) the Atlantic highly migratory species (HMS) fishery, principally targeting tuna and swordfish.² About a half dozen commercial lobster and red crab vessels continue to operate in the Monument.³

The prohibition on fishing in the Monument have not harmed overall landings and revenues in either the squid, mackerel and butterfish fishery or the HMS fishery, based on government data. **Since the Monument’s designation in September 2016, overall landings and revenues have actually increased in the squid, mackerel, and butterfish fishery. Overall tuna and swordfish landings and revenues in the HMS fishery have remained essentially the same.**

Squid/Mackerel/Butterfish Fishery

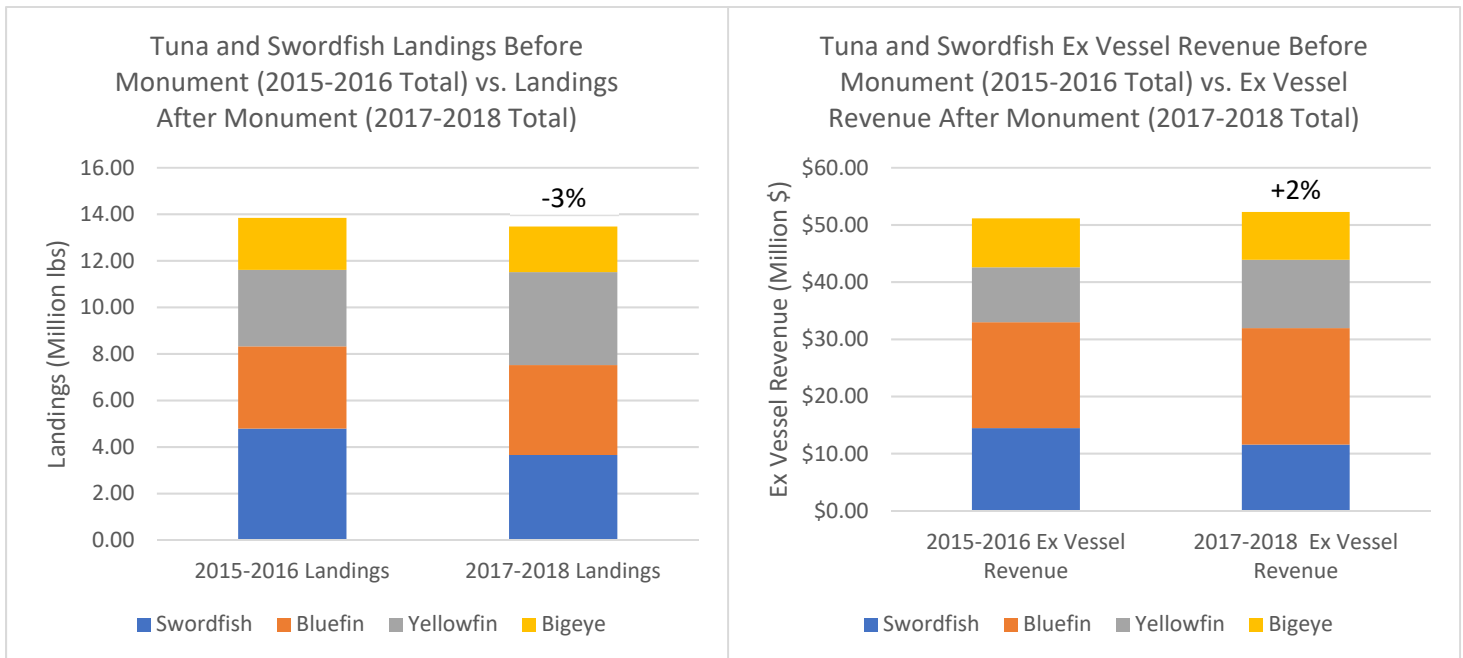
- As the left figure below shows, overall landings in the squid, mackerel, and butterfish fishery increased 61% in 2017-2018, the two years since the Monument’s designation, compared to overall landings in the previous two years (2015-2016).⁴
- As the right figure below shows, **overall revenues (ex-vessel) for the squid, mackerel, and butterfish fishery increased 22% in 2017-2018, following Monument designation, compared to overall revenues in the two years before designation (2015-2016).**
- Landings and revenues in this fishery are also up for Rhode Island specifically, where most landings in the fishery occur and which has the ports most proximate to the Monument: 2017-18 squid, mackerel, and butterfish landings and revenues for Rhode Island increased 35% and 16% respectively over those in 2015-2016.



Source: Atlantic Coastal Cooperative Statistics Program. (2019). *Non-confidential Commercial Landings* [Data file]. Retrieved from https://safis.accsp.org:8443/accsp_prod/f?p=1490:310:9873340730653::NO:RP:P310_GO_FLAG:-1.

Tuna and Swordfish (HMS) Fishery

- As the left figure below shows, overall landings of the principal tuna stocks (bigeye, yellowfin, and bluefin) and swordfish in the Atlantic HMS fishery did not meaningfully change in 2017-2018, the two years following the Monument’s designation, from overall landings in the previous two years (2015-2016).
- Similarly, as the right figure below shows, **overall revenues (ex-vessel) from tuna and swordfish catch in the Atlantic HMS fishery remained essentially unchanged in 2017-2018, the two years after the Monument’s designation, compared to overall revenues for the previous two years (2015-2016).**



Source: Atlantic Coastal Cooperative Statistics Program. (2019). *Non-confidential Commercial Landings* [Data file]. Retrieved from https://safis.accsp.org:8443/accsp_prod/f?p=1490:300:3914913153587::NO:RP:P300_GO_FLAG:-1.

¹ Meghan Lapp, Rhode Island’s Seafreeze, “Murky doings: No due process in monument designation,” published September 19, 2016, <http://centerforsustainablefisheries.org/murky-doings-no-due-process-in-monument-designation/>; Boston Globe, “Interior secretary visits Mass. to review marine monument,” June 16, 2017, <https://www.bostonglobe.com/metro/2017/06/16/interior-secretary-visits-mass-review-marine-monument/7uvirr690diefQdbYVL9bO/story.html> (quoting Meghan Lapp).

² Blue Water Fishermen’s Association, June 23, 2017 memorandum submitted to Secretary Zinke as part of National Monument Review Ref: DOI—2017—0002.

³ Whitmore, K., et al., Characterization of the offshore American lobster and Jonah crab trap fishery in Lobster Conservation Management Area 3 in and around the Southern New England and Georges Bank canyons, April 20, 2016, Updated July 5, 2016 (“ASMFC Offshore Lobster Survey”). Available at https://www.nrdc.org/sites/default/files/media-uploads/3d-160705_asmfc_canyons_report.pdf; J. Eilperin, Washington Post, “Obama designates the first-ever marine monument off the East Coast, in New England”, September 15, 2016, <https://www.washingtonpost.com/news/energy-environment/wp/2016/09/15/obama-to-designate-the-first-ever-marine-monument-off-the-east-coast-in-new-england/>.

⁴ All data used in this analysis is from: Atlantic Coastal Cooperative Statistics Program. (2019). *Non-confidential Commercial Landings* [Data file]. Retrieved from https://safis.accsp.org:8443/accsp_prod/f?p=1490:300:3914913153587::NO:RP:P300_GO_FLAG:-1.