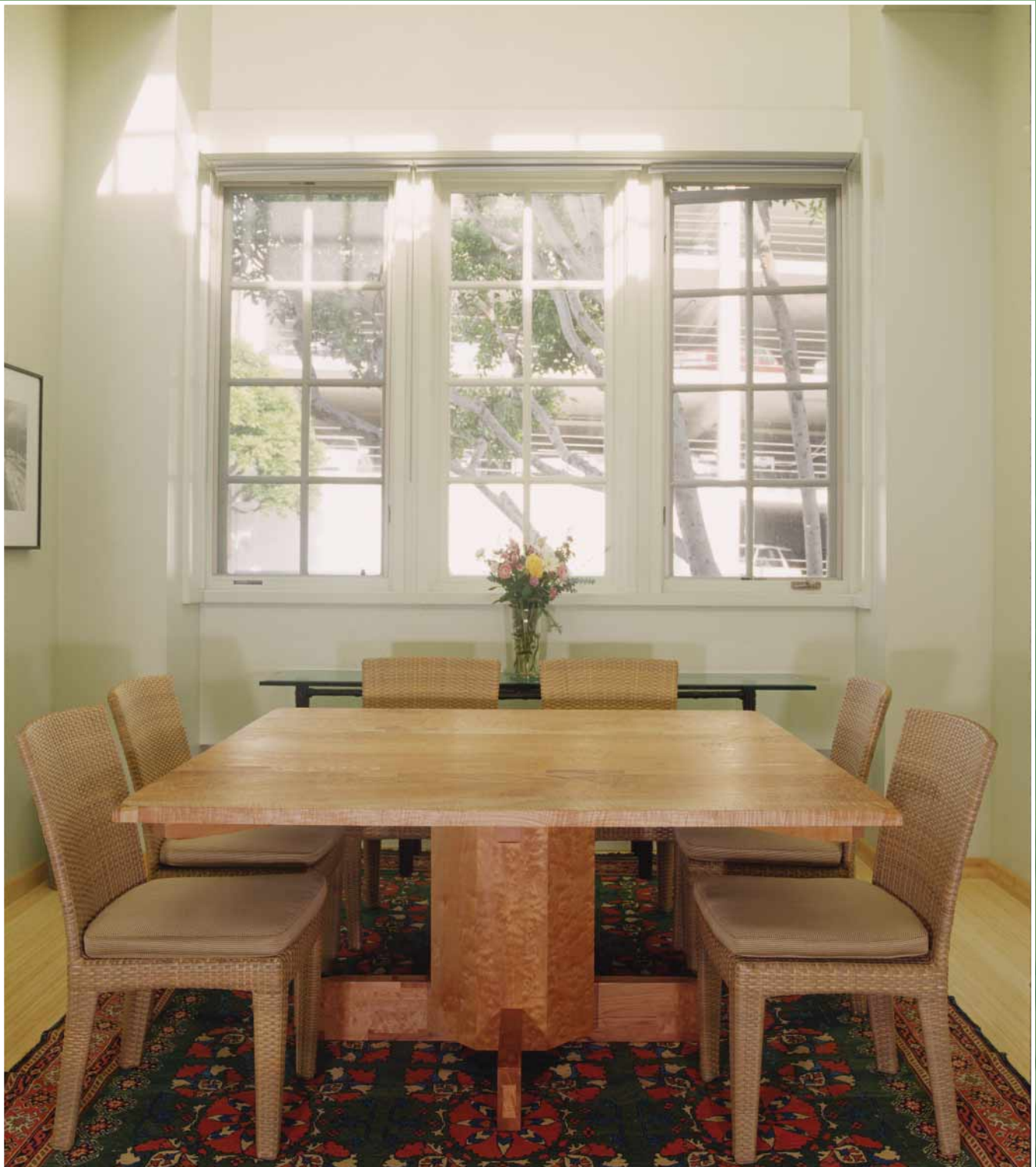


# Furniture



Tim Street Porter

Virtually all of the wood furniture in our building bears the FSC seal of approval, just as most of the lumber used elsewhere does. Stunning conference tables are made with reclaimed maple, considered sustainable because of its rapid growth. Our foyer reception desk contains poplar, which is likewise abundant. The desk's countertop, meanwhile, shimmers with embedded recycled glass chips and abalone shell collected from restaurants.

Other unusual furniture pieces, such as the "seat-belt" chairs in our conference rooms and carpet padding made with recycled blue jeans, give new life to materials that would otherwise cause our landfills to overflow. You'll even find items that make elegant use of industrial by-products, such as fly ash, which is produced when coal is burned. Our offices also are outfitted with sofas, file cabinets, and other previously used items generously donated by Warner Bros. Entertainment, Inc. The following is an overview of sustainable furniture items in The Robert Redford Building.

## Work Areas

### Enclosed Employee Offices

Desks and bookcases are part of the Reff line design by Knoll, Inc. The FSC-certified wood is derived from a manufacturing method that yields 98 percent of the tree versus the typical 48 percent. The laminated furniture is comprised of over 40 percent recycled content and is designed to be cleaned with environmentally-friendly products. Desk lighting is highly efficient and low mercury. Knoll, Inc., Santa Monica, California: 310-289-5800; [www.knoll.com](http://www.knoll.com).



Tim Street-Porter

## Open Area Work Stations

These Equity workstations, by Knoll, Inc., are constructed of steel, with an average recycled content of more than 20 percent, and gypsum, a by-product of coal burning, with an average recycled content of 60 percent. Fabric sections are made of 100 percent recycled content, including soda bottles. File cabinets under desks are part of Knoll's Calibre line. Knoll, Inc., Santa Monica, California: 310-289-5800; [www.knoll.com](http://www.knoll.com).



Tim Street-Porter

## Desk Chairs

These adjustable, ergonomically correct Life Chairs are made primarily of recycled aluminum by Knoll, Inc. Fabrics used for the chairs are made from recycled plastic soda bottles and other recycled materials, and the chair has a total recycled content of 64 percent. Paints and adhesives used have no VOC emissions. Up to 80 percent of the chair's components are easily recyclable. All Knoll materials and components are nontoxic, odorless, non-irritating, and certified by the Greenguard Environmental Institute, a nonprofit organization with a scientific, third-party board that sets environmental standards for interior gas emissions of indoor products and building materials. All wood used is FSC certified. Knoll, Inc., Santa Monica, California: 310-289-5800; [www.knoll.com](http://www.knoll.com).



Gary Leonard



## FIRST FLOOR

---

### Reception Area

#### Reception Desk

Poplar, bamboo, and formaldehyde-free fiberboard with recycled aluminum pull knobs. (Please see photograph on page 19.) Countertops are made of Syndcrete ([www.syndesisinc.com](http://www.syndesisinc.com)), a cement composite that contains fly ash, a coal combustion by-product. No energy-intensive extraction or processing of limited raw materials goes into the production of fly ash. The countertop also includes roughly 60 percent recycled material, including glass chips, abalone shell fragments recycled from restaurants, scrap wood chips, and nylon carpet fiber. Custom made by Santa Monica Millworks, Santa Monica, California: 310-393-6775.

#### Reception Area Samar Rug

Hand-woven abaca fiber, a renewable material made from abaca, a banana-like plant. From Design Within Reach of Santa Monica, California: 310-899-6000; [www.dwr.com/santamonica.cfm](http://www.dwr.com/santamonica.cfm). Rug pad made of 100 percent natural rubber. Purchased online from Waxman's Carpet and Rug Warehouse: [www.wcrw.com](http://www.wcrw.com).

#### Chairs

Hand-woven peeled wicker by Donghia, New York, New York: 212-925-2777; [www.donghia.com](http://www.donghia.com).

## SECOND FLOOR

---

### The Wiatt Family Conference Room

#### Pedestal Conference Table

Handmade by Domestic Furniture out of native big-leaf maple wood from Hardwood Components, a small mill in Oregon. The mill specializes in indigenous species and reclaims hardwood that might otherwise be burned or turned into pulp by industrial wood-products companies that primarily trade in softwoods, such as Douglas fir. Domestic Furniture of Los Angeles, California: 323-936-8206; [www.domesticfurniture.com](http://www.domesticfurniture.com). Hardwood Components: 503-859-2144.

#### Chairs

Made of Hularo, a recyclable, toxin-free resin fiber, with a painted aluminum frame by Janus et Cie, Los Angeles, California: 310-652-7090 or 1-800-24 JANUS; [www.janusetcie.com](http://www.janusetcie.com).

## Glass and Bamboo Table

Bamboo frame with glass top from McGuire Furniture Company, a brand of Kohler Interiors. Also located in the elevator niches on the first and second floors. Purchased from Baker Knapp & Tubbs at the Pacific Design Center, Los Angeles, California: 310-652-7252; [www.kohlerinteriors.com](http://www.kohlerinteriors.com).

## Carpet

The carpet, 100 percent wool, is from Andre's Floor Coverings, Van Nuys, California: 818-902-9240. The carpet padding is 100 percent postindustrial recycled fibers, including nylon, acrylic and polyester. It is made by Chamlian Enterprises, Inc., Fresno, California: 800-399-8597; [www.chamlian.com](http://www.chamlian.com).

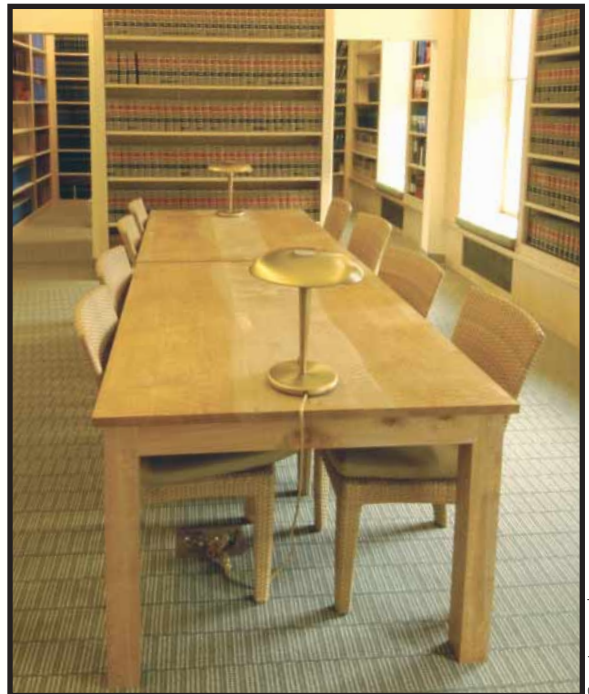
## Library

### Rectangular Library Tables

See full product description under The Wiatt Family Conference Room. Domestic Furniture, Los Angeles, California: 323-936-8206; [www.domesticfurniture.com](http://www.domesticfurniture.com). Hardwood Components: 503-859-2144.

### Chairs

See full product description under The Wiatt Family Conference Room. Janus et Cie, Los Angeles, California: 310-652-7090 or 1-800-24 JANUS; [www.janusetcie.com](http://www.janusetcie.com).



Gary Leonard

## High Density Files

These mobile filing systems save valuable space, which enables NRDC to occupy a smaller office, minimizing environmental impact. Made of metal and aluminum, these systems consist of more than 50 percent recycled materials and can double storage capacity in any given space. They are also installed on our first floor. Custom made by Filing Specialists, Irvine, California: 949-854-0325.



Tim Street Porter

## THIRD FLOOR

---

### The Peter Morton Conference Room

#### Carpeting

See full product description under Sustainable Building Practices and Materials. Bentley Prince Street, City of Industry, California: 800-423-4709; [www.bentleyprincestreet.com](http://www.bentleyprincestreet.com); Interface, Inc., Kennesaw, Georgia: 770-420-6655; [www.interfacesustainability.com](http://www.interfacesustainability.com).

#### Conference Table with Cylindrical Legs

The conference table is part of the Reff line by Knoll, Inc. The wood is grown in forests certified as sustainably managed by the FSC and derived from a manufacturing method that yields 98 percent of the tree versus the typical 48 percent. Knoll, Inc., Santa Monica, California: 310-289-5800; [www.knoll.com](http://www.knoll.com).

#### Chairs

Solid maple frames with seats woven from recycled seat belts left over from auto manufacturers' orders. An Arborline design by Danko of Red Lion, Pennsylvania: 800-882-5300; [www.peterdanko.com](http://www.peterdanko.com).



Gary Leonard

## Ceiling Fans

Multispeed ceiling fans aid natural ventilation. Hampton Bay brand, purchased through Home Depot: [www.homedepot.com](http://www.homedepot.com).

## Flooring

See full product description under Sustainable Building Practices and Materials. Smith & Fong Company, San Francisco, California: 866-835-9859; [www.plyboo.com](http://www.plyboo.com).

## Projection Screen

Da-Lite Boardroom Electrol screen, 6-by-8 foot viewing area, matte white finish. IT4LA, Los Angeles, California: 323-936-4900; [www.it4la.com/tv\\_film\\_production.html](http://www.it4la.com/tv_film_production.html).

## Windows

See full product description under Lighting.

# The Higgins Family Conference Room

## Conference Table with Cylindrical Legs

See full product description under The Peter Morton Conference Room. Knoll, Inc., Santa Monica, California: 310-289-5800; [www.knoll.com](http://www.knoll.com).



## Chairs

See full product description under The Peter Morton Conference Room. An Arborline design by Danko of Red Lion, Pennsylvania: 800-882-5300; [www.peterdanko.com](http://www.peterdanko.com).

## Ceiling Fans

Multispeed ceiling fans throughout the building aid natural ventilation. Hampton Bay brand, purchased through Home Depot: [www.homedepot.com](http://www.homedepot.com).



## Flooring

See full product description under Sustainable Building Practices and Materials. Smith & Fong Company, San Francisco, California: 866-835-9859; [www.plyboo.com](http://www.plyboo.com).

## Carpet

The carpet, 100 percent wool, is from Andre's Floor Coverings: 818-902-9240. The carpet padding is 100 percent postindustrial recycled fibers, including nylon, acrylic and polyester. It is made by Chamlian Enterprises, Inc., Fresno, California: 800-399-8597; [www.chamlian.com](http://www.chamlian.com).

## Videoconference Equipment

The videoconference equipment is comprised of a Polycom View Station, a Panasonic plasma television, and Bose speaker system. The plasma television is Energy Star-rated. The equipment, linked to NRDC's other offices in New York, Washington D.C. and San Francisco, dramatically reduces staff travel expenses and polluting air travel. Polycom, Inc., Pleasanton, California: 1-800-POLYCOM; [www.polycom.com/home](http://www.polycom.com/home). Panasonic, Secaucus, New Jersey; [www.panasonic.com/flash.html](http://www.panasonic.com/flash.html).

## Windows

See full product description under Lighting.

## **The Horn Family Terrace**

### Exterior Siding

See full product description under Sustainable Building Practices and Materials. James Hardie, Mission Viejo, California: 888-542-7343; [www.jameshardie.com](http://www.jameshardie.com).

### Plants

See Landscaping and Irrigation.

### Rooftop Terrace Flooring

See Water Treatment and Recycling System for more information. Wausau Tile Inc., Wausau, Wisconsin: 800-388-8728; [www.wausautile.com](http://www.wausautile.com).



Tim Street-Porter



## Dorathy M. Wood Room

### Appliances

The refrigerator, microwave, and range are manufactured by General Electric. The dishwasher, produced by Eurotech, utilizes approximately half as much water—five gallons—as compared to most U.S.-made dishwashers. All appliances carry the Energy Star rating, which means they exceed government energy efficiency standards by between 10 and 25 percent. Purchased from General Electric: [www.geappliances.com](http://www.geappliances.com) and AM Appliance Group, Richardson, Texas: 972-644-8595; [www.eurotechappliances.com](http://www.eurotechappliances.com).



Tim Street Porter

### Countertops

See full product description under Sustainable Building Practices and Materials. Fiber line from Italy's Abet Laminati. Abet Laminati: 800-228-2238; [www.abetlaminati.com](http://www.abetlaminati.com).

### Light Fixtures

Louis Poulsen, Ft. Lauderdale, Florida, 954-349-2525; [www.louispoulsen.com](http://www.louispoulsen.com).